

2023

PRODUCT
CATALOGUE



Productivity. Powered.
by **greenworks**
COMMERCIAL

greenworks[®]

COMMERCIAL

www.greenworksaustralia.com



MANUFACTURING EXCELLENCE

20K+ state-of-the-art batteries per day
20 production lines



FULLY AUTOMATED

30K+ motors per day - brushless,
universal & induction
50 production lines
450 employees



INTELLIGENT POWER

24 SMT machines
20+ PCB assembly lines
100K+ PCBs per day
30K+ chargers per day

1.2kW Professional Grade Straight Shaft Grass Trimmer

Model No: 82ST12

Skin Only Part No: 2111607AU

2 x 4.0Ah Kit Part No: 2112107AU

- 31cc petrol powered equivalent
- 16" / 40.6cm cutting width
- Direct drive commercial grade brushless motor producing up to 1.2kW of power
- Dual line Load N' Go Max™ bump feed head
- Responsive variable speed trigger for performance and speed up to 6,000rpm



At the heart of the GREENWORKS® 82V string trimmer is a compact direct drive motor that produces 1.2kW of power - equivalent to a 31cc petrol unit - with max speeds of 6,000rpm. Applying this power directly to the spool optimises cutting performance and maximises your runtime with the help of the 4.0Ah battery, capable of 4kms of continuous runtime.

The brushless motor automatically adjusts to varying conditions delivering constant power and torque so it won't bog down, even in overgrown grass as well as making it 13% quieter than a petrol trimmer, which allows you to gain more business by starting earlier or working later. This is a lightweight commercial string trimmer, with low vibration for less fatigue to trim more comfortably.

Holding up to 10m of 0.95" (or nearly 12m of 0.80") of spool with our Load N' Go Max™ bump feed head, you'll spend less time loading line and more time finishing the job at hand. This trimmer puts you at the top of your game with no fumes or emissions, low maintenance and low noise without sacrificing time, money and energy. Live better, works smarter.





Specifications 82ST12

Voltage	82V	Gear Ratio	Direct drive
Motor	Brushless	RPM	6,000
Cutting Width	16" / 40.6cm	Shaft Diameter	1"
Max Power	1.2kW	Shaft Material	Aluminium
Rated Power	1.1kW	Attachment Capable	No
Motor Location	Front	Handle Type	Adjustable
Line Feeding System	Bump head	Electronic ON/OFF	No
Line Capacity	10m	Speed Control	Hi/Lo variable
Dual Line	Yes	Lock-out Type	Palm
Line Diameter	.095" (2.5mm)	Overmold Grip	Yes
Vibration	<5m/s ²	Weight (w/out battery)	4.0kg
Noise Level	68dB @ 15m	Weight (w/4.0Ah battery)	6.04kg
IPX Rating	5	Runtime (w/4.0Ah battery)	Up to 4km

INDUSTRY LEADING BRUSHLESS MOTOR

The GREENWORKS direct drive commercial grade brushless motor efficiently directs power for maximum performance with no maintenance.

80% fewer moving parts than petrol motors for ease of serviceability. No grease, no gears, no oil and no petrol.

Active cooling technology to prevent overheating. Highest efficiency to preserve energy while maximising power and runtime.



Gen II 2.0kW Bike Handle String Trimmer

Model No: 82TB20

Skin Only Part No:2111907AU

- **41cc petrol powered equivalent**
- **18" / 45.7cm cutting width**
- **Direct drive commercial grade brushless motor producing up to 2.0kW of power**
- **Dual line Load N' Go Max™ bump feed head**
- **Responsive variable speed trigger for performance and speed up to 5,500rpm**



The GREENWORKS® 82V 18" 2.0kW brushless string trimmer uses true intelligent power to automatically adjust to varying conditions, providing constant power and torque in even the most overgrown grass.

With 40% more power than a 36cc, 1.9hp petrol trimmer, this trimmer allows you to complete the toughest commercial applications with ease. The compact direct drive brushless motor delivers a constant speed of 5,500rpm to the spool for optimal cutting performance.

With its superior lightweight design, the overmolded bike handles provide maximum comfort and ease of mobility while trimming and brushcutting, letting you power through the entire day with ease.

As part of the most complete portfolio of 82V commercial grade, zero emission landscaping equipment in the industry, this 82V bike handle string trimmer provides premium power and effortless handling.

The Load N' Go Max™ trimmer head, which holds up to 7.9m line, makes for fast, hassle free line reloading - reload in seconds, with no disassembly needed. Simply align, feed, twist and go!



Specifications 82TB20

Voltage	82V	Gear Ratio	Direct drive
Motor	Brushless	RPM	5,500
Cutting Width	18" / 45.7cm	Shaft Diameter	1"
Max Power	2.0kW	Shaft Material	Aluminium
Rated Power	1.5kW	Attachment Capable	No
Motor Location	Front	Handle Type	Adjustable bike handle
Line Feeding System	Bump head	Electronic ON/OFF	No
Line Capacity	7.9m	Speed Control	Hi/Lo variable
Dual Line	Yes	Lock-out Type	Palm
Line Diameter	.095" (2.5mm)	Overmold Grip	Yes
Vibration	<5m/s ²	Weight (w/out battery)	5.25kg
Noise Level	68dB @ 15m	Weight (w/4.0Ah battery)	7.29kg
		Runtime (w/4.0Ah battery)	Up to 4km



The combination of battery, motor, control and charging systems operating in sync, deliver unmatched power and performance compared to any other petrol or battery powered product.

EXCEPTIONAL LITHIUM-ION BATTERY SYSTEMS

DIRECT DRIVE BRUSHLESS MOTOR SYSTEMS

SMART CONTROL SYSTEMS

Gen II 1.8kW Straight Shaft Edger

Model No: 82EC12

Skin Only Part No: 2700007AU

- 2.2" cutting depth
- Direct drive commercial grade brushless motor producing up to 1.5kW of power
- 8" heat treated blade
- Easy to use 2 step switch
- Easy-to-set over sized rear wheel for blade depth adjustment



The GREENWORKS® 82V straight shaft edger delivers the high power and torque necessary for outstanding edging performance in tough condition. Designed for the pros, this edger has an optimised operator position and easy-to-use 2 step switch for comfort and safety, allowing operators to maintain larger properties without runtime constraints.

Equipped with a high efficiency brushless motor, producing 58% more power than a 28cc petrol edger, this unit provides a cutting depth of up to 2.2" with an 8" heat treated blade. A high strength magnesium guard and welded aluminium shaft offer the durability needed to withstand any job thrown at it.

This 82V edger provides up to 7,000rpm, allowing users to tackle large jobs quickly. With a front mount motor and rear mount battery housing, this unit carries a balanced weight of 7.4kg with a battery.

To top it off, this commercial grade edger is IPX4 certified weather and water resistant and 7x quieter than comparable petrol units.



Specifications 82EC12

Voltage	82V	Guard Material	Magnesium
Motor	Brushless	Shaft Material	Aluminium
Cutting Depth	2.2"	Shaft Type	Straight
Depth Adjustment	Yes	Shaft Diameter	1"
Max Power	1.5kW	Attachment Capable	No
Motor Location	Front	Handle Type	Adjustable
Blade Length	8"	Electronic ON/OFF	No
Vibration	2.3m/s ²	Lock-out Type	Palm
Noise Level	62dB @ 15m	Overmold Grip	Yes
RPM	7,000	Weight (w/out battery)	5.36kg
Speed Control	Single speed	Weight (w/4.0Ah battery)	7.4kg
IPX Rating	5	Runtime (w/4.0Ah battery)	Up to 4.8kms

INDUSTRY LEADING BRUSHLESS MOTOR

The GREENWORKS direct drive commercial grade brushless motor efficiently directs power for maximum performance with no maintenance.

80% fewer moving parts than petrol motors for ease of serviceability. No grease, no gears, no oil and no petrol.

Active cooling technology to prevent overheating. Highest efficiency to preserve energy while maximising power and runtime.



Brushless Axial Blower

Model No: 82BH22

Skin Only Part No: 2407907AU



- 27cc petrol powered equivalent
- Variable speed trigger
- Commercial grade brushless motor
- Lightweight with great power
- Cruise control provides long lasting operation with no fatigue



The GREENWORKS® 82V blower utilises the intelligent power of our patented Cyclone-ForceTechnology. This intelligent technology helps professional landscapers get the job done by generating 225km/h from start to finish, moving a greater volume of leaves more efficiently while remaining 2.5x quieter than a petrol powered blower. The Cyclone-ForceTechnology combines high speed and constant power to provide the most efficient blowing system, creating 38% more power than a 27cc petrol blower, meaning users are able to blow away 70% more leaves.

Our commercial grade brushless motor has been designed to perform for over 1,000 hours with no maintenance - no fumes, no emissions and no worries.





Specifications 82BH22

Voltage	82V	Variable Trigger	Yes
Motor	Brushless	Turbo Mode	Yes
Max Power	1.5kW	Fan Cooling System	Yes
Max Speed	225km/h / 1290m ³ /h	Easy Start Up	Yes
Blow Force	22N	Cruise Control	Yes
IPX Rating	4	Response Time	0.7s
Vibration	2.3m/s ²	Weight (w/out battery)	2.5kg
Noise Level	75.5dB @ 15m	Weight (w/4.0Ah battery)	4.54kg
RPM	28,000		



The combination of battery, motor, control and charging systems operating in sync, deliver unmatched power and performance compared to any other petrol or battery powered product.

EXCEPTIONAL
LITHIUM-ION
BATTERY SYSTEMS



DIRECT DRIVE
BRUSHLESS
MOTOR SYSTEMS



SMART CONTROL
SYSTEMS



Dedicated Blower

Model No: 82BH20D

Skin Only Part No: 2408007AU



- 22cc petrol powered equivalent
- Variable speed
- Commercial grade brushless motor
- Lightweight but powerful
- Cruise control provides long lasting operation with no fatigue
- Best choice for road cleaning - efficiently remove leaves, dirt and more

The GREENWORKS® 82V dedicated blower has a commercial grade brushless motor providing more power, longer runtime and an extended motor life. It also offers variable speed for precise power control and cruise control for consistent operation for jobs of all sizes. This lightweight, yet powerful unit generates air speed of up to 298km/h so you'll be able to blow through your weekend garden clean up in no time.

Harness & Cord

Suits Part No: 2408007AU Blower

Skin Only Part No: 2983502





Specifications 82BH20D

Voltage	82V	RPM	26,500
Motor	Brushless	Variable Trigger	Yes
Max Power	1.2kW	Cruise Control	Yes
Max Speed	298km/h / 1060m ³ /h	Weight (tool only)	2.1kg
Blow Force	18.8N	IPX Rating	4

INDUSTRY LEADING BRUSHLESS MOTOR

The GREENWORKS direct drive commercial grade brushless motor efficiently directs power for maximum performance with no maintenance.

80% fewer moving parts than petrol motors for ease of serviceability. No grease, no gears, no oil and no petrol.

Active cooling technology to prevent overheating.

Highest efficiency to preserve energy while maximising power and runtime.



Dual Port Backpack Blower



Model No: 82B26

Skin Only Part No: 2407807AU

- 51cc petrol powered equivalent
- Constant 339km/h power
- Variable speed trigger with cruise control
- Lock in turbo mode
- Ergonomic padded shoulder straps
- Dual battery compartments for longer runtime
- Commercial grade brushless motor
- Detachable blower tube
- Adjustable tube length



The GREENWORKS® 82V backpack blower utilises the intelligent power of our patented Cyclone-Force Technology which combines high speed and constant power to provide the most efficient blowing system allowing users to clear bigger piles of wet or dry leaves in tall grass with ease. This intelligent technology helps professional landscapers get the job done by generating 310km/h from start to finish, moving 25% more leaves more efficiently and 1.5x quieter than comparable petrol units while the variable speed trigger offers users complete control on the job

Optimised dual draw battery technology powers an axle fan, brushless motor and intelligent controller to create a 63cc equivalent turbine blowing system all while reducing vibration to half and providing up to 60 minutes of continuous runtime on high, 34 minutes on turbo mode and 2-3 hours on low when using 2 x 8.0Ah batteries (sold separately).

The lightweight design places batteries closer to the users back to reduce fatigue from all day usage. Placement of the motor and tube allows it to be removed and be used as a backpack battery system to extend runtime without the added weight.



Specifications 82B26

Voltage	82V	RPM	26,000
Motor	Brushless	Variable Trigger	Yes
Max Power	2.2kW	Turbo Mode	Yes
Max Speed	339km/h / 1170m ³ /h	Fan Cooling System	Yes
Blow Force	26N	Easy Start Up	Yes
IPX Rating	4	Response Time	0.7s
Noise Level	73.4dB @ 15m	Weight (w/out battery)	6.7kg
		Weight (w/2 x 4.0Ah battery)	10.78kg

INDUSTRY LEADING BRUSHLESS MOTOR

The GREENWORKS direct drive commercial grade brushless motor efficiently directs power for maximum performance with no maintenance.

80% fewer moving parts than petrol motors for ease of serviceability. No grease, no gears, no oil and no petrol.

Active cooling technology to prevent overheating. Highest efficiency to preserve energy while maximising power and runtime.



26" Dedicated Hedge Trimmer

Model No: 82H26D

Skin Only Part No: 2207507AU

- 27cc petrol powered equivalent
- 26" / 660mm blade length
- Direct drive commercial grade brushless motor
- 4,300 strokes per minute
- 180° rotating rear handle, easy trimming at any angle
- Weight saving plug-in waist/backpack battery design
- Backpack harness and cord included



The GREENWORKS® 82V dedicated hedge trimmer has been designed for the pros with a contoured overmolded handle for user comfort and a high efficiency gear box for high power and torque for an outstanding cutting performance, even in the toughest conditions.

It comes with a backpack battery harness which removes the battery weight from the unit for all day performance, making it 38% lighter than petrol models without sacrificing power and allows the operator to carry out maintenance of larger properties without runtime constraints or fatigue.

Low noise, low maintenance and no petrol smell.



Specifications 82H26D

Voltage	82V
Motor	Brushless
Cutting Depth	1.2" / 30.4mm
Blade Length	26" / 660mm
Rotating Handle	Yes
Gear Ratio	2.7
Cutting Speed	2,000rpm
Speed Limiter	Yes
Anti Jam Function	Yes
Weight (w/out battery)	3.6kg

INDUSTRY LEADING BRUSHLESS MOTOR

The GREENWORKS direct drive commercial grade brushless motor efficiently directs power for maximum performance with no maintenance.

80% fewer moving parts than petrol motors for ease of serviceability. No grease, no gears, no oil and no petrol.

Active cooling technology to prevent overheating. Highest efficiency to preserve energy while maximising power and runtime.

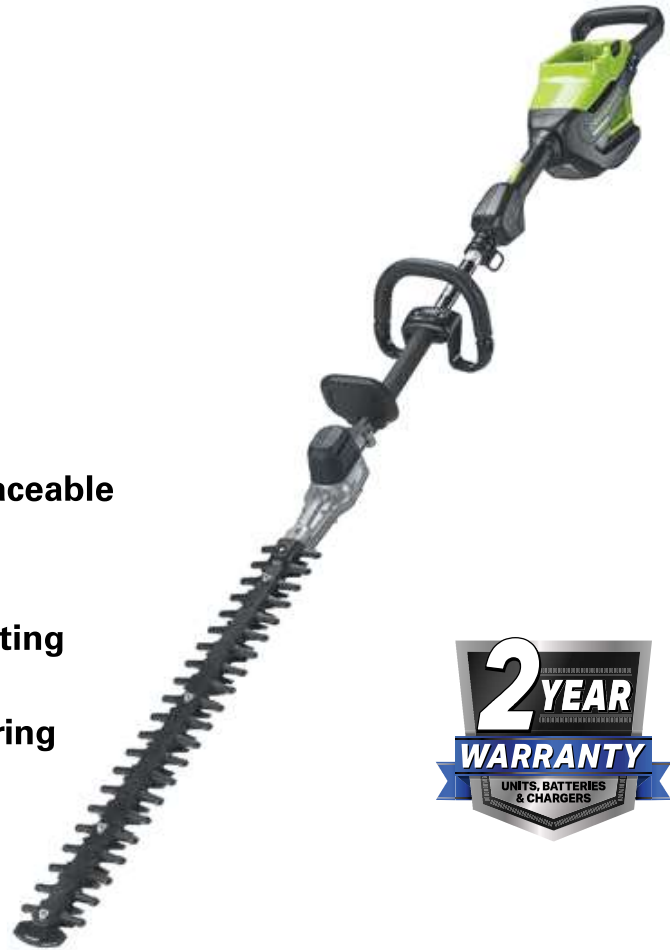


Gen II Short Pole Hedge Trimmer

Model No: 82PH30F

Skin Only Part No: 2301307AU

- 25cc petrol powered equivalent
- 24" / 609mm dual action laser cut, replaceable steel blades
- Commercial grade brushless motor
- 6 position pivoting head for all your cutting needs
- Lightweight design for easy manoeuvring



Thanks to the Quik-Cut System™ powered by a brushless motor and optimised gearbox, the GREENWORKS® 82V fixed hedge trimmer generates enough power to reach consistently high blade speeds of up to 4,300 strokes per minute, for a faster and more efficient cut than petrol.

At only 5.4kg, this unit is 20% lighter than comparable petrol models, making it one of the most compact and lightweight trimmers in its class and with a runtime of up to 205 minutes on one charge (2.5Ah battery) it's designed to be the most energy efficient, meaning longer runtimes and getting more work done in a day.

The patented Quik-Cut System™ eliminates the need for a petrol standard flex shaft with front motor housing and reduces the overall tool weight by removing the internal flex drive shaft. Rear motor housing creates better weight distribution and balance, while the compact magnesium gearbox and optimised gear ratio provide an incredible durable and lightweight user experience.

This short pole fixed hedge trimmer is part of the complete portfolio of commercial grade 82V zero emission landscaping equipment from GREENWORKS Commercial - the leading manufacturer of commercial battery powered landscaping equipment.



Specifications 82PH30F

Voltage	82V	Anti Jam	Yes
Motor	Brushless	Blade Material	Stainless steel
Blade Length	24" / 609mm	Articulation angle	135°
Shaft Length	30"	Trigger	Single speed
Strokes p/minute	4,300	Handle Type	3 sided aux. handle
Cut Capacity	1.2" / 30.4mm	Overmold Grip	Yes
Vibration (main handle)	5.8m/s ²	IPX Rating	4
Vibration (aux. handle)	5.7m/s ²	Weight (w/out battery)	4.2kg
Noise Level	66.3dB @ 15m	Weight (w/4.0Ah battery)	6.24kg



The combination of battery, motor, control and charging systems operating in sync, deliver unmatched power and performance compared to any other petrol or battery powered product.

EXCEPTIONAL
LITHIUM-ION
BATTERY SYSTEMS



DIRECT DRIVE
BRUSHLESS
MOTOR SYSTEMS



SMART CONTROL
SYSTEMS



Gen II Telescopic Pole Hedge Trimmer

Model No: 82PH62T

Skin Only Part No: 2301407AU

- 25cc petrol powered equivalent
- 24" / 609mm dual action laser cut, replaceable steel blades
- 2,150rpm professional brushless motor provides extraordinary power
- 6 position pivoting head with height adjustable telescoping shaft



Put every job within reach with the GREENWORKS® 82V telescopic pole hedge trimmer. Weighing just over 7kg, this unit features an easy to use twist function which extends the shaft from approximately 256cm to 365cm for improved mobility and maximum reach and being lightweight offers less fatigue than with comparable petrol models.

Key features for this unit include the 7 position 135° articulating head for a full range of trimming, 20" dual action laser cut replaceable steel blades for increased durability, two step trigger and palm lock for increased safety when in use and a lock-in, durable battery compartment.

The patented Quik-Cut System™ eliminates the need for a petrol standard flex shaft with front motor housing and reduces the overall tool weight by removing the internal flex drive shaft. Rear motor housing creates better weight distribution and balance, while the compact magnesium gearbox and optimised gear ratio provide an incredible durable and lightweight user experience.

This telescopic pole fixed hedge trimmer is part of the complete portfolio of commercial grade 82V zero emission landscaping equipment from GREENWORKS Commercial - the leading manufacturer of commercial battery powered landscaping equipment.



Specifications 82PH62T

Voltage	82V	Anti Jam	Yes
Motor	Brushless	Blade Material	Stainless steel
Blade Length	24" / 609mm	Degree of Articulation	135°
Shaft Length	40"	Trigger	Single speed
Total Length	2.2m	Handle Type	Straight
Strokes p/minute	4,300	Overmold Grip	Yes
Cut Capacity	1.2"	IPX Rating	4
Vibration (main handle)	5.8m/s ²	Weight (w/out battery)	5kg
Vibration (aux. handle)	5.7m/s ²	Weight (w/4.0Ah battery)	7.04kg
Noise Level	66.3dB @ 15m		

INDUSTRY LEADING BRUSHLESS MOTOR

The GREENWORKS direct drive commercial grade brushless motor efficiently directs power for maximum performance with no maintenance.

80% fewer moving parts than petrol motors for ease of serviceability. No grease, no gears, no oil and no petrol.

Active cooling technology to prevent overheating.

Highest efficiency to preserve energy while maximising power and runtime.



Gen II Telescopic Pole Saw

Model No: 82PST39

Skin Only Part No: 1402307AU

- 10" bar and chain for easy trimming of limbs and branches
- Automatic oiling system
- Extended pole for maximum reach
- Soft rubber handle for comfortable grip
- Over 12' reach with telescopic shaft



Cut and limb your way through the day with the GREENWORKS® 82V telescopic pole saw. The direct drive commercial grade brushless motor and gear box offers exceptional efficiency and produces performance 30% more than a comparable petrol model and with the reduced effort two step trigger start, you'll waste no time getting started.

Cut with confidence with the 10" bar and chain, providing ease of use while delivering the highest cutting performance and with the evenly balanced, 50-50 tip to motor weight balance, you'll be able to work longer without user fatigue. The built-in harness ring (strap included) and branch hook allow users to limb safely and quickly and the 15° angle head provides maximum precision and cutting angles for exact cuts at extended lengths.

One battery can power 50+ 82V products - mow, blow, cut, trim, cultivate and more!



Specifications 82PST39

Voltage	82V
Motor	Brushless
Power	700W
Bar Length	10"
Auto Oiler	Yes
Chain Pitch	1/4"
Chain Gauge	.050"
Chain Speed	18m/s
Pole Type	Telescopic
IPX	4
Vibration	<2.5m/s ²
Weight (w/bar & chain)	5.4kg
Weight (w/4.0Ah battery)	7.44kg

INDUSTRY LEADING BRUSHLESS MOTOR

The GREENWORKS direct drive commercial grade brushless motor efficiently directs power for maximum performance with no maintenance.

80% fewer moving parts than petrol motors for ease of serviceability. No grease, no gears, no oil and no petrol.

Active cooling technology to prevent overheating. Highest efficiency to preserve energy while maximising power and runtime.



1.5kW Top Handle Chainsaw

Model No: 82TCS15

Skin Only Part No: 2009407AU



- 10" bar and chain for easy trimming of limbs and branches
- Lightweight
- 24m/s chain speed
- Low noise and environmentally friendly



The GREENWORKS® top handle chainsaw is an 82V high performance, exceptionally lightweight and powerful unit that was designed specifically for the professional arborist. Offering industry leading power to weight ratio, thanks to the 1.5kW digital brushless motor and exceptionally low weight of just 2.1kg. To minimise weight during use, the battery mounts onto a low profile backpack harness, offering freedom of movement while working in trees. With GREENWORKS even the most demanding arborist jobs can be carried out quickly, efficiently and safely.

Our 82V technology rivals an equivalent 35cc petrol chainsaw yet has significantly lower running and ownership costs, making it a viable option for any professional user or business. As well as the cost and performance benefits the GREENWORKS 82V range offers additional safety in the workplace, with low vibration, low noise, and zero emissions or harmful fumes for the operator when cutting. Additionally this chainsaw features an integrated chain brake, patented palm lock to avoid accidental start-up, and secure climbing hook as well as being IPX4 rated.

As part of the GREENWORKS 82V professional line-up, the battery is interchangeable in any of the 82V range from lawnmowers, hedge trimmers, blowers and even power cutters. Offering one battery for multiple professional applications.



Specifications 82TCS15

Voltage	82V	Chain Pitch	1/4"
Motor	Brushless	Chain Gauge	0.50"
Bar Length	10"	Chain Tension	With tool
Max Power	1.5kW	Oil Capacity	150ml
Torque	1Nm	Tank Cap	Flip up
Chain Speed	24m/s	On/Off Switch	Yes
Trigger	Variable	Weight (w/out battery)	2.1kg
		Runtime (w/4.0Ah battery)	< 35 minutes

INDUSTRY LEADING BRUSHLESS MOTOR

The GREENWORKS direct drive commercial grade brushless motor efficiently directs power for maximum performance with no maintenance.

80% fewer moving parts than petrol motors for ease of serviceability. No grease, no gears, no oil and no petrol.

Active cooling technology to prevent overheating.

Highest efficiency to preserve energy while maximising power and runtime.



18" 2.7kW Chainsaw

Model No: 82CS27

Skin Only Part No: 2009107AU



- 55cc petrol powered equivalent
- 18" bar & chain
- Automatic oiler
- Translucent oil tank, visible oil level at a glance
- 2,700 watt brushless motor
- Low noise and low vibration



Cut faster than petrol every time with the GREENWORKS® 82V 18" commercial chainsaw. The brushless direct drive motor and cutting system combines 3.4Nm of torque and constant power to provide optimal cutting performance while decreasing noise and vibration and gives you all the power of a 55cc petrol engine with a faster cutting speed - 2.7kW/3.6hp output.

Offering commercial grade runtimes, you can make up to 210 cuts per charge (using a 4.0Ah battery) and get consistently high torque, sustaining high cutting speeds under load, which will allow for longer runtimes.

This chainsaw is built with the professional/arborist in mind and by combining optimised ergonomics with commercial performance, it is designed to be power, fast and lightweight so users can work longer without fatigue.



Specifications 82CS27

Voltage	82V	Chain Type	Semi chisel
Motor	Brushless	Chain Pitch	.325"
Bar Length	18"	Chain Gauge	0.50"
Max Power	2.7kW	Drive Links	72
Rated Power	2.4kW	Chain Break	Inertia-activated
Max Torque Disp.	55cc	Chain Tension	Side manual
RPM	11,000	Sprocket Type	Rim 7
Chain Speed	25m/s	Oiler	Automatic
Trigger	Variable	Oil Capacity	220ml
IPX Rating	4	Handle Type	Wrap around with rubber
Vibration	4.8m/s ²	Weight (w/out battery)	4.7kg
Noise Level	73.2dB @ 15m	Weight (w/4.0Ah battery)	6.74kg
		Runtime (w/4.0Ah battery)	Up to 210 cuts



The combination of battery, motor, control and charging systems operating in sync, deliver unmatched power and performance compared to any other petrol or battery powered product.

EXCEPTIONAL
LITHIUM-ION
BATTERY SYSTEMS



DIRECT DRIVE
BRUSHLESS
MOTOR SYSTEMS



SMART CONTROL
SYSTEMS



20" 3.4kW Chainsaw

Model No: 82CS34

Skin Only Part No: 2009207AU



- 65cc petrol powered equivalent
- 20" bar and chain
- Pure steel bucking spikes for efficient and steady cutting
- Translucent oil tank, visible oil level at a glance
- Automatic oiler
- Low noise and low vibration
- 3,400 watt brushless motor

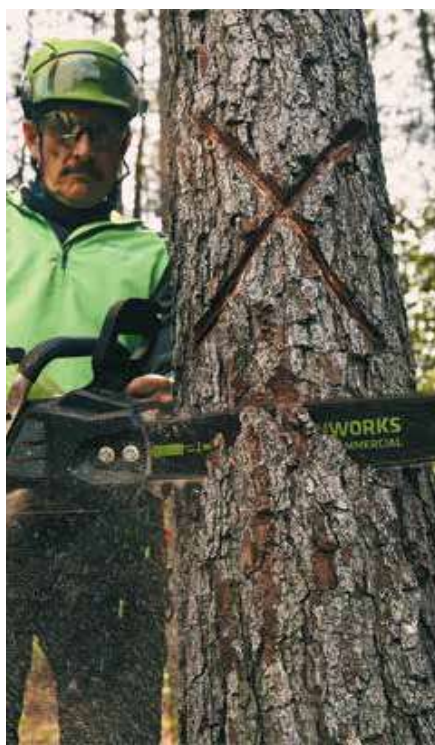


Built with the professional landscaper/arborist in mind, the GREENWORKS® 82V 20" commercial chainsaw is the most powerful battery powered chainsaw in its class. This unit's combination of power and speed sets the standard for lithium-ion battery power and outperforms comparable petrol models.

With the equivalent power of a 4.56hp engine and 65cc displacement petrol engine, this ultra high performance chainsaw leverages a built-in commercial grade brushless direct drive motor and lithium-ion batteries to provide the power and torque necessary to cut faster than petrol.

Utilising 3.4kW of max power and 4Nm of torque to generate up to 13,000rpm when cutting, it maintains a consistently higher rpm than petrol alternatives so users don't have to worry about bogging down in the middle of a cut, maximising their productivity and with a lower noise rating (72.9dB at 15m) it is 3x quieter than petrol!

With up to 205 cuts on a single charge (using a 4.0Ah battery), this chainsaw is part of the industry's most complete portfolio of commercial grade, zero emission battery powered landscaping equipment.



Specifications 82CS34

Voltage	82V	Chain Pitch	.325"
Motor	Brushless	Chain Gauge	0.50"
Bar Length	20"	Drive Links	78
Max Power	3.4kW	Chain Break	Inertia-activated
Rated Power	2.9kW	Chain Tension	Side manual
Max Torque Disp.	65cc	Sprocket Type	Rim 7
RPM	11,000	Oiler	Automatic, adjustable
Chain Speed	25m/s	Oil Capacity	250ml
Trigger	Variable	Handle Type	Wrap around with rubber
IPX Rating	4	Weight (w/out battery)	5.75kg
Vibration	5m/s ²	Weight (w/4.0Ah battery)	7.79kg
Noise Level	72.9dB @ 15m	Runtime (w/4.0Ah battery)	Up to 205 cuts

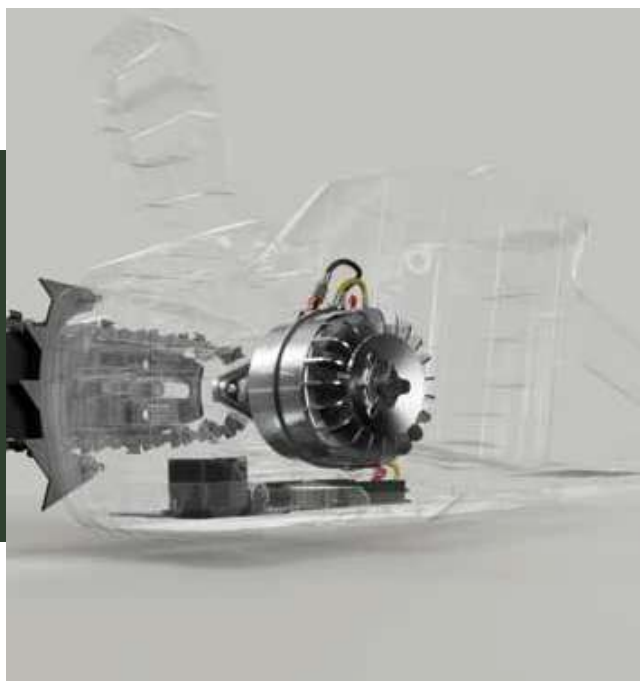
INDUSTRY LEADING BRUSHLESS MOTOR

The GREENWORKS direct drive commercial grade brushless motor efficiently directs power for maximum performance with no maintenance.

80% fewer moving parts than petrol motors for ease of serviceability. No grease, no gears, no oil and no petrol.

Active cooling technology to prevent overheating.

Highest efficiency to preserve energy while maximising power and runtime.



21" Self-Propelled Lawnmower

Model No: 82LM21S

Skin Only Part No: 2530302AU



- 160cc petrol powered equivalent
- 21" commercial grade 14 gauge steel deck
- Mow up to 1.5 acres on a single charge
- Commercial grade brushless motor
- 3-in-1 cutting system
- Dual port system provides more power and doubles your runtime



Power through all day long and turn heads with the GREENWORKS® 82V 21" self-propelled lawnmower. This mower flexes its muscles with a 21" heavy duty steel deck that delivers a superior cut quality and rapid blade speeds ranging between 2,800 - 3,200rpm. SmartCut™ Technology causes the 3.4kW brushless motor to autoadapt to grass conditions, meaning more power is rushed to blades in thicker, taller and wetter grass, outclassing its 160cc competition.

Simple to start, with just a push of a button, and easy to manoeuvre due to its super lightweight design and rear wheel drive, this mower is effortless to operate. It also delivers a quiet 79dB cut that's gentle on the ears and it can be stored in small spaces when not in use. Its dual port powerhead holds up to two batteries to delivery extended runtimes, giving you up to 90 minutes or 1.5 acres on a single charge!

With 2x more torque, even in the tallest grass it maintains a higher blade speed than petrol meaning you get no clumping or missed grass due to low blade speed. It also provides a higher lift for the best cut in any condition. The single lever height adjustment quickly raises or lowers the deck for different grass conditions with 7 positions for precise mowing and the handle adjusts for the users height and folds down for easy storage.

The GREENWORKS 21" self-propelled mowers provides a cleaner, more consistent cut and requires no maintenance, that means no more dealing with oil, spark plugs, fuel filters, air filters, petrol fumes and emissions.



Specifications 82LM21S

CUTTING MOTOR(S)

Voltage	82V
Motor	Brushless
Max Power	2.8kW
Rated Power	2.44kW

OTHER

Drive System	Rear wheel, self-propelled
Wheels	8" front 10" rear
Automatic Shut Off	Yes

Noise Level 79dB @ 15m

IPX Rating 5

Runtime (2 x 8.0Ah) Up to 1.5 acres

Cutting Speed Up to 5.6km/h

Weight (w/out battery) 33.12kg

DECK

Cutting Width 21"
Deck Type Stamped 14 gauge steel

Mulch Yes

Collector Bag Yes

Side Discharge Yes

Cutting Height 35mm - 100mm

Blade Type Multi-purpose

Blade Speed 2,800 - 3,200rpm

Cutting positions 7

Deck Lifting System Single lever

INDUSTRY LEADING BRUSHLESS MOTOR

The GREENWORKS direct drive commercial grade brushless motor efficiently directs power for maximum performance with no maintenance.

80% fewer moving parts than petrol motors for ease of serviceability. No grease, no gears, no oil and no petrol.

Active cooling technology to prevent overheating.

Highest efficiency to preserve energy while maximising power and runtime.



25" Self-Propelled Lawnmower

Model No: 82LM25S

Skin Only Part No: 2518507AU



- 160cc petrol powered equivalent
- 25" commercial grade 14 gauge steel deck
- Mow up to 1.5 acres on a single charge
- Commercial grade brushless motor
- 2-in-1 cutting system
- 7 position height adjustment system
- Dual port system provides more power and doubles your runtime



The GREENWORKS® 82V 30" self-propelled lawnmower will turn heads and make the competition jealous with performance, intelligence and innovative independence that they'll wish they had. The muscle of this mower flexes with its heavy duty 25" heavy duty steel deck and with more intelligent power than any of its 160cc comparable petrol competitors, the 25" cut delivers superior cut quality with premium blade speed ranging between 4,000-4,500rpms.

This mower features dual counter rotating mulching blades for the best quality cut which provide a 30% better cut quality and the large 25" deck gives the user a 20% quicker cut time. Runtime is a sure thing, up to 90 minutes on a single charge, with the dual battery ports and the powerfully tough commercial grade motor will allow you to manoeuvre effortlessly, give you increased traction up hills and slopes and cut through the thickest challenges with ease. It also provides a higher lift for the best cut in any condition. The single lever height adjustment quickly raises or lowers the deck for different grass conditions with 7 positions for precise mowing and the handle adjusts for the users height and folds down for easy storage.

Designed to be quiet, at only 790dB, mow your lawns when the petrol guys can't, also forget the petrol can, oil, spark plug, fuel filter, air filter and enjoy fume and emission free mowing.



Specifications 82LM25S

CUTTING MOTOR(S)

Voltage 82V

Motor Brushless

Max Power 1.6kW

OTHER

Drive System Rear wheel, self-propelled

Wheels 8" front
10" rear

Automatic Shut Off Yes

Noise Level 79dB @ 15m

IPX Rating 5

Runtime (2 x 8.0Ah) Up to 1.5 acres

Cutting Speed Up to 5.6km/h

Weight (w/out battery) 37.88kg

DECK

Cutting Width 25"

Deck Type Stamped 14 gauge steel

Mulch Yes

Collector Bag Yes

Cutting Height 35mm - 100mm

Blade Type Multi-purpose

Blade Speed 4,000 - 4,500rpm

Cutting positions 7

Deck Lifting System Single lever



The combination of battery, motor, control and charging systems operating in sync, deliver unmatched power and performance compared to any other petrol or battery powered product.

EXCEPTIONAL
LITHIUM-ION
BATTERY SYSTEMS



DIRECT DRIVE
BRUSHLESS
MOTOR SYSTEMS



SMART CONTROL
SYSTEMS



30" Self-Propelled Lawnmower

Model No: 82LM30S

Skin Only Part No: 2518207AU

- 224cc petrol powered equivalent
- 30" commercial grade 12 gauge steel deck
- Mow up to 2 acres on a single charge
- Tri-port powerhead holds up to 3 batteries to deliver superior runtime
- Independently controlled wheel motors for optimised traction & manoeuvrability
- High visibility LED light for navigating in low light conditions
- Dual sealed motors provide up to 16,153ft/min blade tip speed for best cutting performance



The GREENWORKS® 82V 30" self-propelled lawnmower features some of the best modern technological advances in outdoor power equipment. It is equipped with two independently controlled hub wheel motors and twin dual brushless cutting motors delivering more power than 200cc petrol mowers. The ETS (EasyTurn System) drive system automatically adjusts the power to compensate for sloped conditions and effortless control. Constant power and torque is directed to the hub motors providing faster cutting speeds and more torque than petrol units. It is also the first push lawnmower to have a reverse function to easily power out of tight areas.

Petrol units lack the technology to adapt to grass conditions on the fly and are limited to only 3,600 rpms on average, leading to uncut grass, clumping and inefficient bag collection. With independent brushless motors, our mowers achieve higher blade tip speeds and automatically increase power to maintain consistency throughout the cut. Our intelligent mowers never bog down, even in the tallest, thickest and wettest grass.

Designed for the commercial landscaper, the 82V 30" lawnmower boasts an extra large grass bag that carries 12% more clippings than comparable units and has independently controlled wheels for optimised traction. It also includes a smart LCD screen that provides the status of the lawnmower (battery status, speed control, blade speed and error codes) and a tri-port powerhead that holds three batteries for continuous runtime.



Specifications 82LM30S

CUTTING MOTOR(S)

Voltage 82V

Motor Brushless

Max Power 4kW

Rated Power 3kW

OTHER

Drive System Rear wheel, self-propelled

Wheels 9.5" x 3" front
10.5" x 3" rear

Collector Bag Capacity 85L

Automatic Shut Off Yes

Noise Level 79dB @ 15m

IPX Rating 5

Runtime (3 x 8.0Ah) Up to 2 acres

Cutting Speed Up to 6.1km/h

Weight (w/out battery) 82kg

DRIVE MOTOR(S)

Voltage 82V

Type 2 independent HUB

Max Power 0.8kW

DECK

Cutting Width 30"

Deck Type Stamped 12 gauge steel

Mulch Yes

Collector Bag Yes

Cutting Height 38mm - 127mm

Blade Type Multi-purpose

Blade Speed 3,600 - 4,000rpm

Cutting positions 8

Deck Lifting System Single lever

INDUSTRY LEADING BRUSHLESS MOTOR

The GREENWORKS direct drive commercial grade brushless motor efficiently directs power for maximum performance with no maintenance.

80% fewer moving parts than petrol motors for ease of serviceability. No grease, no gears, no oil and no petrol.

Active cooling technology to prevent overheating.

Highest efficiency to preserve energy while maximising power and runtime.



12" 3.2kW Power Cutter

Model No: 82PC300

Skin Only Part No: 2009307AU



- 55cc petrol powered equivalent
- Compact design
- 12" segmented diamond blade for wet cuts
- Built-in LED and cut line indicator
- Fingertip controlled variable water flow
- Soft rubber handle for comfortable grip



The GREENWORKS® 82V 3.2kW power cutter provides industry leading performance to handle any application, indoors or outdoors with the equivalent power of a 55cc engine. A best-in-class cutting depth of up to 4.3" cuts through any material, while the state-of-the-art brushless motor provides constant power output and ensures the fastest cut from start to finish without bogging down.

The compact design provides all the power of petrol while enabling users to work in tighter spaces. Get instant power with a pull of a trigger, increasing productivity and decreasing fatigue compared to starting a comparable petrol model. At 20% lighter than other cutters, you can work longer with less fatigue and without sacrificing performance.

Working in dusty environments with a petrol power cutter can choke the engine by clogging the air filter. This zero emission power cutter eliminates petrol headaches and allows users to work more safely indoors and with 4x less noise and reduced vibration. No petrol, no priming, no pulling - drop in a battery and start cutting.



Specifications 82PC300

Voltage	82V	Adjustable Water Control	Yes
Motor	Brushless	On Board Water Connection	Yes
Blade Diameter	12"	Cut Depth	4.3"
Max Power	3.2kW	RPM	5,248
Rated Power	2.5kW	Blade Speed	85m/s
Max Torque	5.2Nm	Handle Type	Wrap around with rubber
IPX Rating	4	Weight (w/out battery)	5.7kg
Vibration	4m/s ²	Weight (w/4.0Ah battery)	7.74kg
Noise Level	93dB @ ear	Runtime (w/4.0Ah battery)	Up to 140 cuts



The combination of battery, motor, control and charging systems operating in sync, deliver unmatched power and performance compared to any other petrol or battery powered product.

EXCEPTIONAL
LITHIUM-ION
BATTERY SYSTEMS



DIRECT DRIVE
BRUSHLESS
MOTOR SYSTEMS



SMART CONTROL
SYSTEMS



8" 1.4kW Earth Auger

Model No: 82EA8

Skin Only Part No: 3707807AU

- Includes extension shaft and bit
- Xcore™ 1.4kW brushless motor
- High intensity LED lights
- Hardened tubular steel frame
- Quick change auger bit system
- Drill holes ranging from 4" - 12"
- Designed forward/reverse switch



Designed with the professional landscaper in mind, the GREENWORKS® 82V 1.4kW earth auger with Xcore™ delivers as much power as a 45cc petrol engine. The powerful brushless motors drives the auger bit with 81ft/lbs of torque at 210rpm.

The brushless motor provides more torque and quiet operation and depending on conditions, the ability to drill up to 35 holes on one charge when using 8" bits (using 4.0Ah battery). The welded tubular steel frame and handles and hardened all metal gear and drive system ensure a longer life while the oversized comfort grip handles provide maximum comfort during operation.

With 3 high intensity LED lights to illuminate the digging area, you'll be able to work in low light conditions allowing you to get more from your workday. The low vibration - less than $4m/s^2$ - creates less user fatigue to cut more comfortably for longer and with a quick change auger blade system you'll be able to tackle a wider variety of holes with ease.

Enjoy quick and easy hassle free, one button operation without the fuss of petrol or fumes.



Specifications 82EA8

Voltage	82V	Bit Diameter	8"
Motor	Brushless	Hole Diameter	4" - 12"
Max Power	1.4kW	Shaft Diameter	7/8"
Forward Speed	210rpm	On/Off Switch	Yes
Reverse Speed	50rpm	LED Lights	Yes
Torque	59ft/lb	Weight (w/battery)	12.25kg
Vibration	<4m/s ²	Runtime (w/4.0Ah battery)	Up to 35 holes, 4"-12"
Noise Level	85dB @ ear		

INDUSTRY LEADING BRUSHLESS MOTOR

The GREENWORKS direct drive commercial grade brushless motor efficiently directs power for maximum performance with no maintenance.

80% fewer moving parts than petrol motors for ease of serviceability. No grease, no gears, no oil and no petrol.

Active cooling technology to prevent overheating.

Highest efficiency to preserve energy while maximising power and runtime.



Commercial Work Light

Model No: 82WL1

Skin Only Part No: 3502707AU

- Produces 2500 lumen of light
- Hanging hook included
- 360° rotating head for full light in any space
- Perfect for using at job sites
- Can be powered by battery or cord



Batteries



- Powerful and lightweight design
- Protects from overcharge, over temperature and over current
- Built-in Bluetooth for real time monitoring

Charge forward with GREENWORKS® 82V lithium-ion battery solutions - compatible with all 82V handheld tools. Powers 50+ products - one battery to mow, blow, cut, trim, cultivate and more!

Model No: 82BD400 - 4.0Ah
Skin Only Part No: 2983202AU



Specifications 82BD400

Voltage	82V	LED Display	Yes
Battery Capacity	4.0Ah / 288Wh	Bluetooth Connectivity	Yes
Rated Power	3,200W 45A	Charging Time 100% 2958302AU/CAB810 charger	40 minutes
Max Power	4,500W	Weight	2.04kg

Model No: 82BD800 - 8.0Ah
Skin Only Part No: 2965902AU



Specifications 82BD800

Voltage	82V	LED Display	Yes
Battery Capacity	8.0Ah / 576Wh	Bluetooth Connectivity	Yes
Rated Power	4,600W 65A	Charging Time 100% 2958302AU/CAB810 charger	80 minutes
Max Power	6,000W	Weight	3.85kg

8A Dual Port Charger

Model No: CAB810

Skin Only Part No: 2958302AU

- 2 rapid charging ports
- 650W output
- LED display
- Charges 2 x 4.0Ah batteries in 60 minutes
- Independent LED indicators displaying charging status
- Active cooling system rapidly cools battery temperature

Specifications CAB810			
Input Voltage	120V	Output Power	650W
Input Current	10A	Active Cooling	Yes
Output Current	8A	Weight	2.14kg



Charge forward with the GREENWORKS® dual port charger, with unconditional compatibility, its two active ports can rapidly charge any 82V battery, regardless of size.

The independent LED indicators display the charging status and diagnostics of each battery and the built in fan, active cooling system sustains the temperature of the batteries allowing a quicker charge as well as extending the life of the battery.



6 Port Charger

Model No: 82C6

Skin Only Part No: 2952607AU

- Rapidly charge up to 6 batteries in as little as 80 minutes
- Intelligent charging - adjusts the rate of charge and monitors charge level and temperature
- Active forced air cooling
- Heavy duty weather resistant design



Specifications 82C6

Input Voltage	120V	Output Power	1,500W
Input Current	15A	Active Cooling	Yes
Output Current	6A per 2 slots	Weight	17.5kg



Always have batteries charged and available for superior productivity with the GREENWORKS® mobile 6 port charger. This durably tough charger has a rugged tubular steel frame with rubber feet, high strength polymers, an integrated lid to protect the batteries and an IPX rating of 4, making it water resistant, so it can handle daily use at any job site.

With unconditional compatibility, it can charge any 82V battery, regardless of size. The independent LED indicators display the charging status and diagnostics of each battery and the optimised air flow system pulls hot air out of each pack quickly and efficiently to rapidly cool down the battery 3x faster.

The folding handle and rear wheels make for easy transportation so you can power through all day long, no matter how tough.